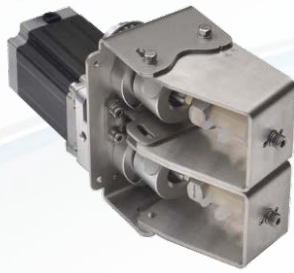


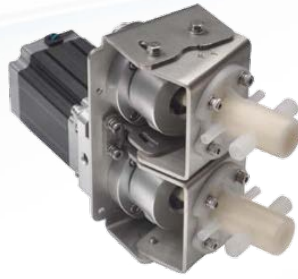
雙頭BW無閥陶瓷柱塞泵總成

Double Pump Valveless Ceramic Plunger Pump Assembly

XB™



BW-05/07



BW-10



BW-13

/應用範圍/

- 實驗設備、分析設備、製藥設備物料定量分配或連續輸送的重要部件。
- 廣泛應用於醫藥、製藥、食品、化工、化妝品等行業精密定量灌裝。
- 用於血液、生物試劑、口服液、注射液、高級化妝品、香精、殺菌劑等液體精密定量灌裝。
- 各種酸鹼腐蝕性液體精密定量灌裝。

/Application scope/

- Important parts of experimental equipment, analyzing equipment and pharmaceutical equipment for the rationing of materials of successive transportation.
- Wildly applied to precision quantitative filling of industries such as medicine, pharmacy, food, chemistry, cosmetics, etc.
- Used for precision quantitative filling of liquids such as blood, biological reagent, oral liquid, injection liquid, senior cosmetics, fragrance, fungicide, etc.
- Used for precision quantitative filling of all kinds of acid and alkali corrosive liquid.

規格 Technical Parameters

型號 Model	BW-05-2	BW-07-2	BW-10-2	BW-13-2
柱塞直徑 Plunger diameter	5mm	7mm	10mm	13mm
材料 Material	柱塞·泵腔套 (氧化鋁、氧化鋯) Plunger, pump cavity set (alumina、zirconia)		柱塞·泵腔套 (氧化鋁、碳化矽) Plunger, pump cavity set (alumina、silicon carbide)	
每轉吐出量 Throughput/rev	0.17ml/rev	0.3ml/rev	0.7ml/rev	1.6ml/rev
灌裝精度/轉速 Filling accuracy spinning speed	±0.5~1%/0~600RPM		±0.5%/0~500RPM	
安放角度/吞吐壓力 Placement angle / throughput pressure	15°/0.6MPa		20°/0.6MPa	
最大吸程高度 Maximum suction height	4m (本產品的資料測量以水為介質) (This product data measurements to water as the medium)			
重量 Weight	2.6kg		2.8kg	3.4kg



盛慶企業有限公司
SHENG-CING INSTRUMENTS CO.,LTD

高雄:(07)313-5388 台北:(02)2808-4030
E-mail: service@shengcing.com
www.shengcing.com